

Name	Geo-Informatics and Space Technology Development Agency (GISTDA)
Ministry	Ministry of Higher Education, Science, Research and Innovation
Country	Thailand
Mandate	GISTDA is the core national space agency in Thailand that not only provides geospatial applications and space technology related consultancy including capacity building, but also knowledge and data sharing, space-derived and geospatial information application development for specific purposes to the users in Thailand and the region.
Core Functions	<ol style="list-style-type: none"> 1. To develop space technology and geo-informatics applications to be beneficial to the general public 2. To develop the satellite data base and the derived natural resources information center 3. To provide data services relating to space technology and geo-informatics 4. To provide technical services and develop human resources in satellite remote sensing and geo-informatics 5. To conduct researches and development as well as to implement other activities related to space technology, including the development of small satellites for natural resources survey 6. To be the core organization to establish common standards for remote sensing and geo-informatics systems
Website	www.gistda.or.th
Contact	120 The Government Complex, Rattaprasasanabhakti Building, 6th and 7th Floor, Chaeng Wattana Road, Lak Si Bangkok 10210, THAILAND Tel.+66(0)-2141-4470 Fax +66(0)-2143-9586
Logo	



Operational Platform 'GISTDA COVID-19 iMap' for COVID-19 Situation Administration in Thailand

Description of your organization's response to Covid-19 (250 Words)

Geo-Informatics and Space Technology Development Agency (GISTDA) is the core national space agency under the supervision of the Minister of Higher Education, Science, Research and Innovation of Thailand and a member of *the Working Group on Data Integration and Analysis for Covid-19 Situation*. The working group was initiated under the Centre for COVID-19 Situation Administration. GISTDA had played a prominent role in the integration of COVID-19 related information.

To support the working group, GISTDA identified the need for a platform to help at the operational level, especially the inspection teams in each province in Thailand. The platform integrates data so that it can be summarized, linked to maps and visualized on dashboard for specific users.

The target users of this platform are mainly the government agencies to enable them to monitor the pandemic situation, medical capacity and supplies, consumer goods, as well as and design necessary preventive and precautionary measures.

The geospatial capabilities, datasets and/or tools deployed for the response (150 words)

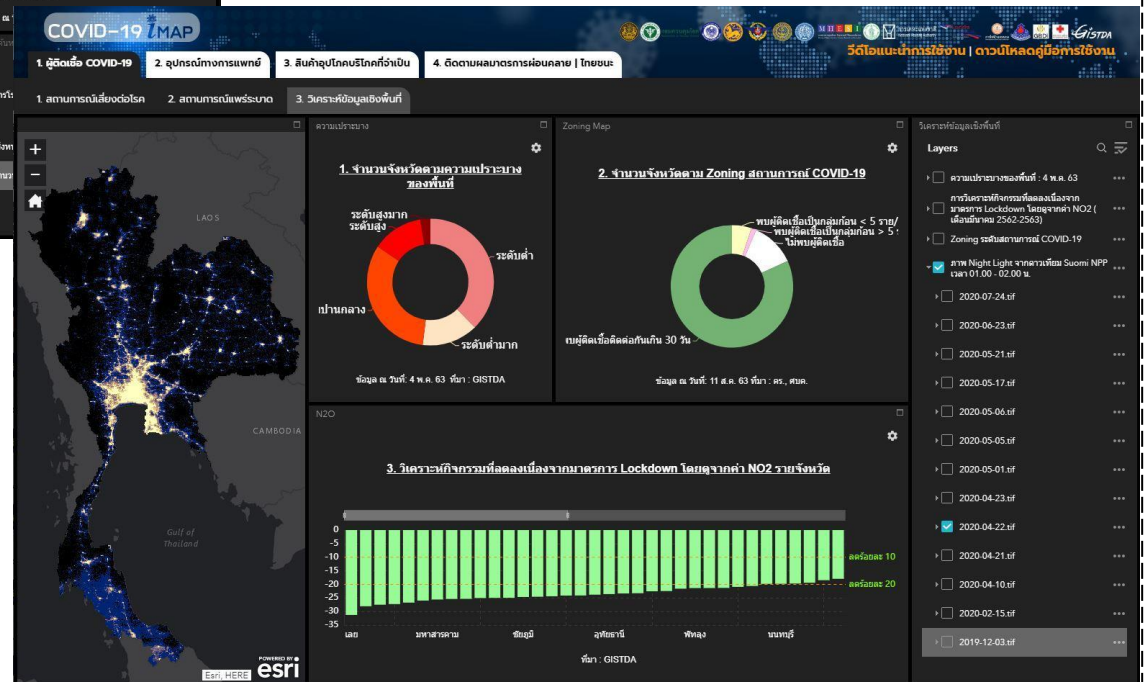
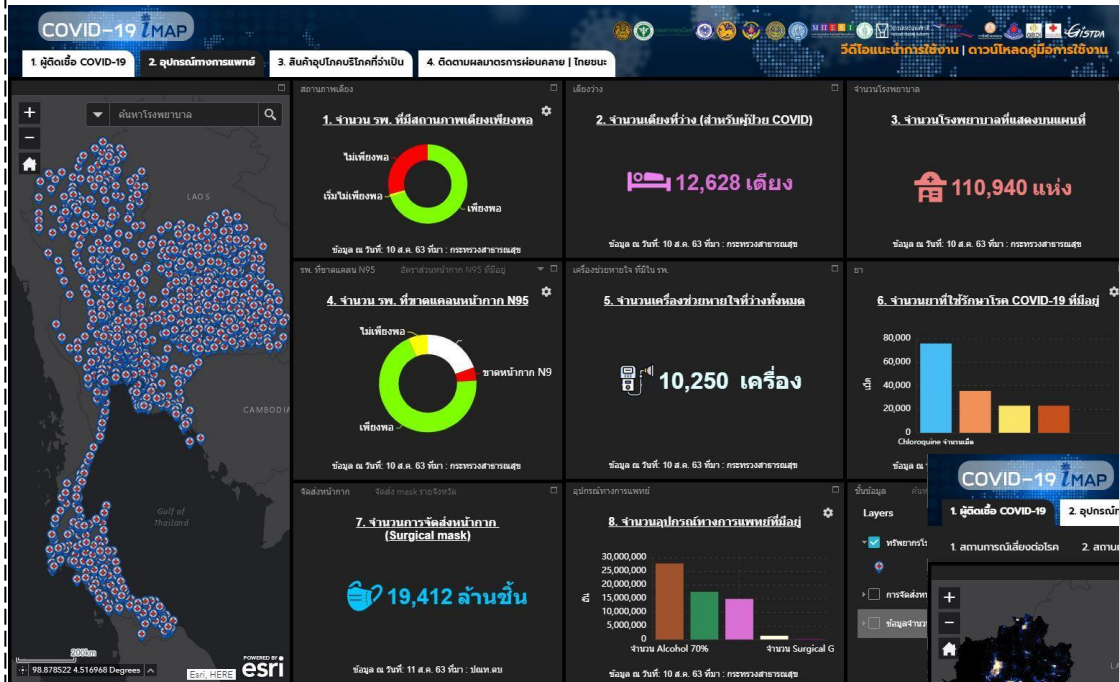
The COVID-19 iMap is an operation platform that not only allowing users to visualize and monitor the pandemic situation in Thailand, but also enabling them in examining and monitoring the impact of the policies employed in the country.

The datasets are geospatial and non-geospatial data from relevant agencies in the country. These data were contributed by different agencies with different mandates. The information and numbers are integrated, summarized, analyzed and displayed on the newly developed dashboard.

The COVID-19 iMap is considered an efficient tool to support the policy makers, the Working Group on Data Integration and Analysis for Covid-19 Situation for operation planning, as well as inspection teams, Centre for Correction of Security Emergency, and Provincial Disease Control Centre's.



Image of dashboard, datahub or website. Please provide the web-link to the dashboard, datahub or website developed for your country's response to Covid-19
 Website: <https://gistdaportal.gistda.or.th/>



Describe what other datasets and their data sources (e.g. from other organization/ministry) used or describe how bringing data from multiple sources together for the response (150 Words)

GISTDA, as the member of the Working Group on Data Integration and Analysis for Covid-19 Situation under the Secretariat of the Prime Minister of Thailand, has integrated a wide variety of COVID-19 related data, information and numbers from various government and private agencies. The information were summarized and visualized on the dashboard to support and prevention and precaution design and decision-making.

The Working Group on Data Integration and Analysis for Covid-19 Situation mandated the relevant agencies in government and private sector to provide their essential information to GISTDA.

The datasets are:

- Medical Supplies/Capacity (Ministry of Public Health)
- Patient Data (Ministry of Public Health Database)
- Consumer Goods (Ministry of Commerce)
- Distribution of Surgical Masks (Thailand Post Distribution Co. Ltd.)
- Thai tracking application (Ministry of Interior)
- Phonphai (Thai Red Cross)
- Risk Group (Bangkok Metropolitan Administration)
- Night Light Images (GISTDA)

Describe what was key to the success of your organization's contribution in the national response to Covid-19 or the achievements made (250 words)

- The COVID-19 iMap showcased huge benefits of geospatial information and space technology applications for emergency response in both policy and operational level.
- GISTDA promotes the important use of geospatial information and space technology for emergency response
- Data are very valuable. In order to integrate the available data, cooperation, authority and communication among different agencies is the key success to incorporate the data to the platform.

