


Webinar on Strengthening regional cooperation in geospatial data sharing for mitigation of COVID-19 pandemics

May 15th, 2020

Mr. Zhang Shibai,
Deputy Director, Department of International Corporation,
Ministry of Natural Resources, China



In China, GIS played important role in :

- 1) revealing the spatial and temporal pattern of epidemic situation and the laws of spatial spread
- 2) predicting the risk analysis of the spread of the epidemic situation and carry out early warning and forecast
- 3) infection risk assessment based on population movement spatial trajectory data

In China, GIS played important role in :

4) construction of epidemic emergency management information system based on GIS

5) different regional epidemic situation differentiation, prevention and control and coordinated management countermeasures

6) the social governance approach in which multiple subjects participate in an epidemic crisis

In China, GIS played important role in :

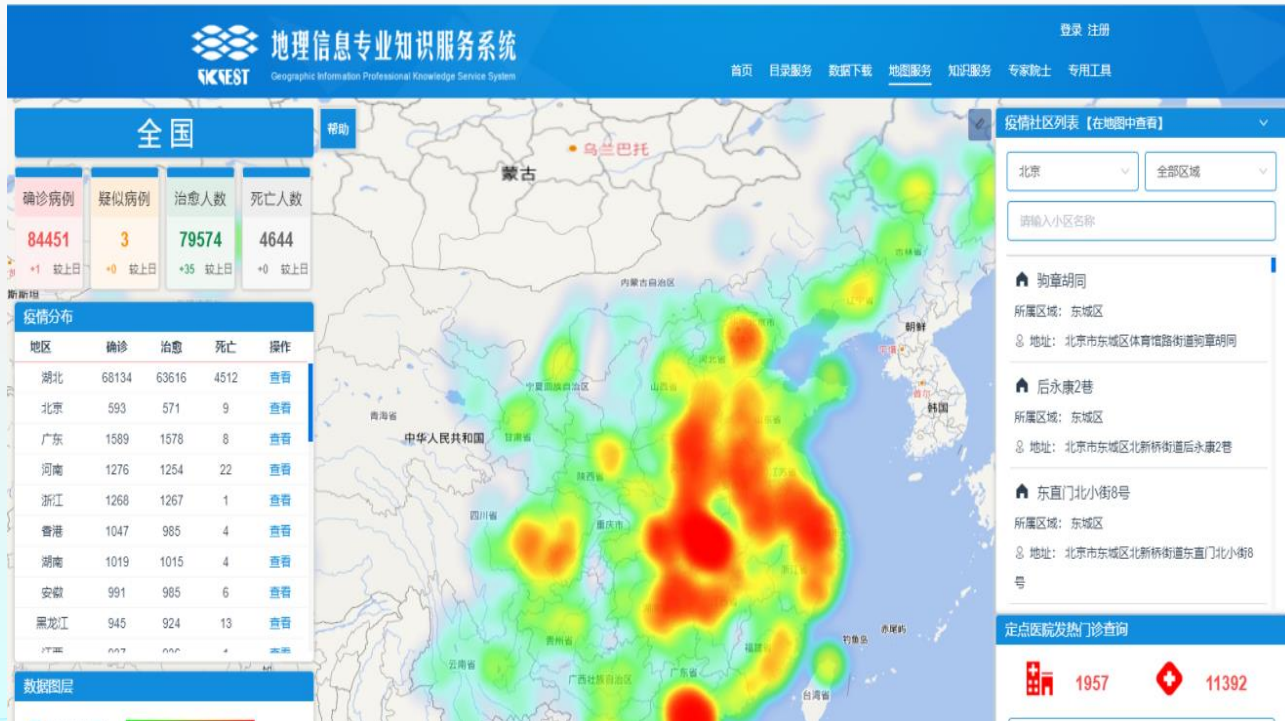
7) analyzing the impact of the epidemic on the social production structure and put forward countermeasures for restoration and reconstruction

8) revealing the public's spatial perception and behavior rules of the spread of the epidemic, to take corresponding measures

.....

Practices and Cases Sharing

COVID-19 Thematic Map



Practices and Cases Sharing



GaoFen-2 and Jilin-1 multispectral satellite images showing the construction site of the Huoshenshan Hospital before and after construction

Practices and Cases Sharing



Alipay's Health Code System showing Green and Red Codes respectively

Willing to share

